

愛犬外出方便 養狗人士清理有責 Clean up after your dog



善用狗廁所
Take your dog to a dog latrine

包好狗糞並善用狗糞收集箱
Wrap up the mess and
place dog faeces in a dog
excreta collection bin



任何人士容許狗隻便溺弄污街道、公眾地方或建築物的公用部分，
可處最高罰款25,000元或定額罰款3,000元。

Any person who allows his/her dog to foul any street,
public place or the common parts of any building with its excreta
is liable to a maximum fine of \$25,000 or a fixed penalty of \$3,000.

食物環境衛生署

Food and Environmental Hygiene Department

熱線 Hotline: 2868 0000

電郵 E-mail: enquiries@fehd.gov.hk

網頁 Website: www.fehd.gov.hk

各區環境衛生辦事處

District Environmental Hygiene Offices

中西區 Central/Western
☎ 2545 0506

東區 Eastern
☎ 2563 4340

南區 Southern
☎ 2552 8406

灣仔 Wan Chai
☎ 2507 3364

離島 Islands
☎ 2852 3215

油尖 Yau Tsim
☎ 2302 1299

旺角 Mong Kok
☎ 2395 2727

深水埗 Sham Shui Po
☎ 2748 6959

九龍城 Kowloon City
☎ 2711 2493

黃大仙 Wong Tai Sin
☎ 2328 6531

觀塘 Kwun Tong
☎ 3102 7388

荃灣 Tsuen Wan
☎ 2212 9701

葵青 Kwai Tsing
☎ 2420 9204

北區 North
☎ 2679 2812

大埔 Tai Po
☎ 3183 9119

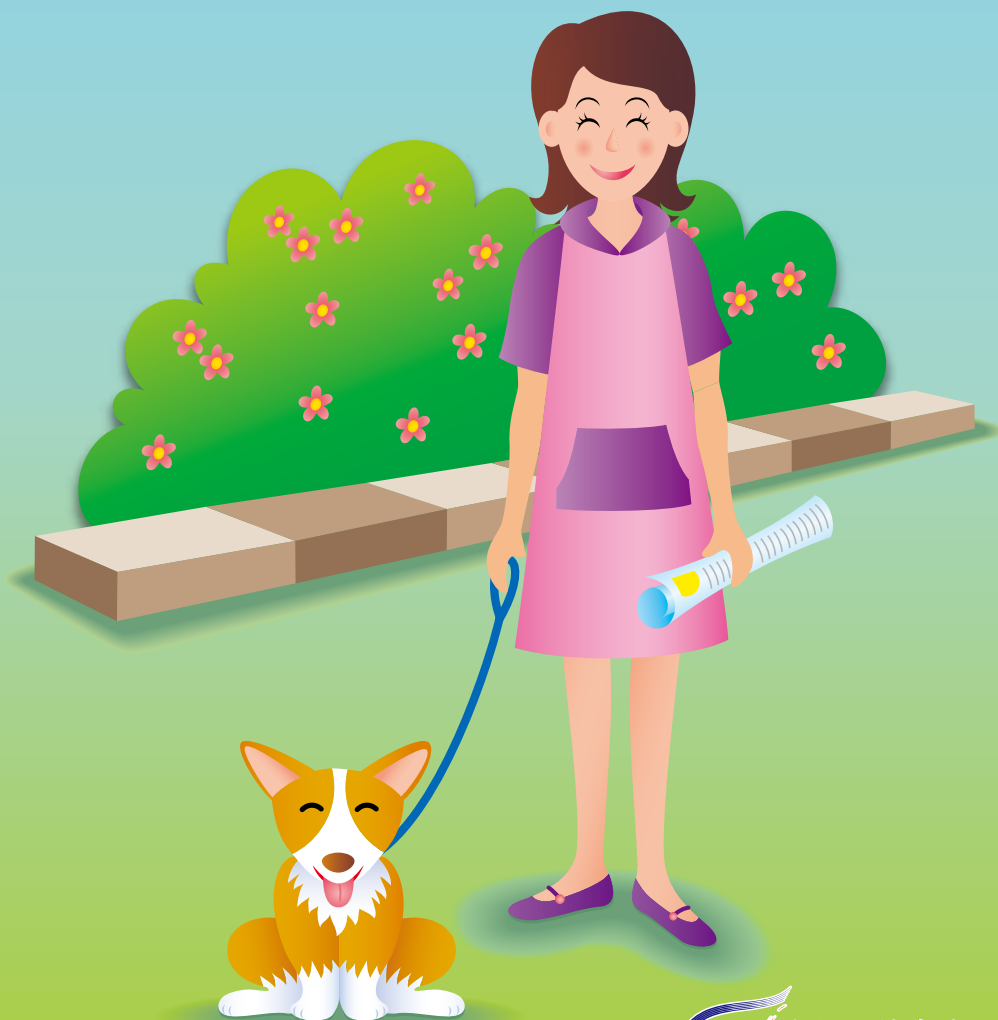
西貢 Sai Kung
☎ 3740 5100

沙田 Sha Tin
☎ 2634 0136

屯門 Tuen Mun
☎ 2146 8642

元朗 Yuen Long
☎ 2475 3433

愛犬外出方便 放狗人士清理有責 Clean up after your dog



愛犬外出方便 放狗人士清理有責

不同類型的狗隻同樣討人歡喜，但如果放狗人士任由牠們隨處留下大小便溺，便令人討厭。

無論你是狗主或是替人放狗，同樣有責任防止狗隻便溺弄污公眾地方。根據《定額罰款(公眾地方潔淨及阻礙)條例》(香港法例第570章)，任何人士容許狗隻糞便弄污街道或公眾地方會被定額罰款3,000元。

此外，根據《公眾潔淨及防止妨擾規例》(香港法例第132章，附屬法例)，任何人士容許狗隻大便或小便弄污建築物的公用部分，最高可被罰款25,000元。

齊齊努力 保持香港清潔

任由狗隻隨處便溺，弄污地方，即不雅觀，更令人討厭。放狗人士應該：

- 帶備足夠紙張，以便將狗糞妥為包好，再放進狗糞收集箱。
- 帶備足夠清水，把被弄污的地方清潔妥當。
- 善用狗廁所，歡迎致電食物環境衛生署各區環境衛生辦事處查詢有關位置。

假如你被判罰，這絕非狗隻的錯失。
It is not your dog's fault if you are fined.



Clean up after your dog

Dogs are pleasing in whatever types and sizes. But what bring nuisances to others are the dog excreta left in public place when you walk your dog.

If you walk a dog, no matter it belongs to you or not, you have a responsibility to stop it from fouling public place. Under the Fixed Penalty (Public Cleanliness and Obstruction) Ordinance (Chapter 570, Laws of Hong Kong), any person who allows his/her dog to foul any street or public place by faeces will be liable to a fixed penalty of \$3,000.

Moreover, the Public Cleansing and Prevention of Nuisances Regulation (Chapter 132, subsidiary legislation, Laws of Hong Kong) stipulates that any person who allows his/her dog to deposit any faeces or urine in the common parts of a building will be liable to a fine of up to \$25,000.

Let's keep Hong Kong clean

DO NOT let your dog foul public place. This is unsightly and creates nuisances to others. When walking a dog:

- DO carry enough paper to wrap up dog faeces properly and deposit it in a dog excreta collection bin.
- DO carry enough water to clean up the soiled area.
- DO look for the nearest dog latrine. Please contact the Food and Environmental Hygiene Department's District Environmental Hygiene Offices for the locations of dog latrines.

狗隻便溺後，切記要善後。只是舉手之勞，便可保持香港清潔衛生，何樂而不為？

Remember to clean up after your dog. This is easy to do and will make Hong Kong a cleaner and more pleasant place.

