

Anti-mosquito measures

Let's remove stagnant water
Eliminate mosquitoes for healthy living



Advice for ferry
owners/crewmembers

Purpose

This leaflet offers advice to ferry owners, masters and crewmembers on ways to control the breeding of mosquitoes, especially *Aedes albopictus*.

The Mosquito Problem

Mosquitoes cause nuisance to human beings. Some species even pose threats to public health as vectors of diseases like dengue fever – a severe mosquito-borne disease characterised by high fever, severe headache, muscle and joint pain, pain behind the eyes and rash. *Aedes albopictus*, a vector of dengue fever and severe dengue, is prevalent in Hong Kong. Its breeding places can be grouped into two broad categories: artificial receptacles like containers, discarded tyres, lunch boxes and cans; and natural habitats such as tree holes, bamboo stumps and leaf axils.

In addition to active flying, mosquitoes could also be carried to other places by vessels or other means of transport. Moreover, mosquito could also breed in stagnant water on a vessel.

Anti-mosquito Programme

It is important for ferry owners, masters and crewmembers to actively take part in mosquito control in order to contain the mosquito problem and to prevent the breeding of mosquitoes on their vessels. Ferry owners/ masters should draw up anti-mosquito programmes for their vessels.

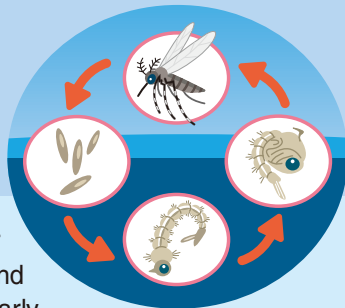
Objectives

The anti-mosquito programme aims to achieve the following objectives:

- To encourage ferry crewmembers to participate in preventing and containing the mosquito problem;
- To eliminate breeding /potential breeding places for mosquitoes; and
- To get rid of mosquitoes on board the ferry to contain the mosquito problem.

Working Schedule

As it takes an average of 7 days for eggs of mosquitoes to develop into adult mosquitoes, inspection of the vessel should be conducted every 7 days.



Co-ordination Plan

Ferry owners/masters should arrange for their crewmembers to inspect the ferry and undertake anti-mosquito measures regularly.

Mosquito Prevention and Control Measures

The following measures are recommended to be taken on the ferry:

- Dispose of refuse, especially empty lunch boxes and soft drink cans, into refuse collection bins with well-fitted covers;
- Properly cover all water containers;
- Make large holes on tyres used as anti-bumping measure;
- Change the water in flower vases at least once every week;
- Drain off any stagnant water in the saucers of flower pots.

Stagnant water with larvae of mosquitoes should be discarded.

Adult mosquitoes found on the ferry should be killed by using household aerosol pesticides.



Enquiries

For further information on how to control and prevent *Aedes albopictus*, please contact the **Pest Control Advisory Section on 3188 2064** of the Food and Environmental Hygiene Department.



English website