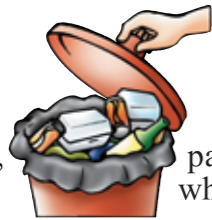


Preventive Measures

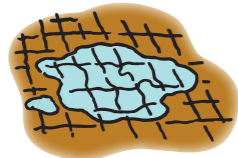
1 Remove stagnant water.



2 Properly dispose of refuse, boxes and soft drink cans particularly empty lunch which may collect water.



3 Tightly cover all water containers, wells and water storage tanks.



4 Top up all defective ground surfaces by sand, mud or cement.



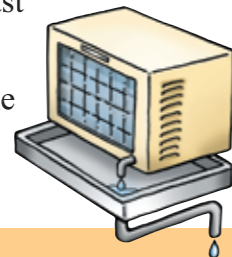
5 Clear refuse and fallen leaves inside drains and surface channels to prevent blockage.



6 Wrap up disused tyres properly or puncture them to prevent water trapping.



7 Change water in flower vases and remove the water underneath potted plants at least once a week.



8 Ensure no stagnant water accumulated in the trays underneath air-conditioning units.



ENQUIRIES

You may browse the website http://www.fehd.gov.hk/english/safefood/dengue_fever/index.html for the anti-mosquito weekly inspection programmes of different premises.

ENQUIRIES

Food and Environmental Hygiene Department
Hotline : 2868 0000

Central / Western

10th Floor, Sheung Wan Municipal Services Building,
345 Queen's Road Central, Hong Kong
Tel : 2545 0506

Wan Chai

7th Floor, Lockhart Road Municipal Services Building,
225 Hennessy Road,
Wan Chai, Hong Kong
Tel : 2507 3364

Eastern

3rd Floor, Quarry Bay Municipal Services Building,
38 Quarry Bay Street, Hong Kong
Tel : 2563 4340

Southern

4th Floor, Aberdeen Municipal Services Building,
203 Aberdeen Main Road, Hong Kong
Tel : 2552 8406

Kwun Tong

Level 7, Shui Wo Street Municipal Services Building,
9 Shui Wo Street, Kwun Tong, Kowloon
Tel : 3102 7388

Wong Tai Sin

3rd Floor, Tai Shing Street Market Building,
121 Choi Hung Road, Wong Tai Sin, Kowloon
Tel : 2328 6531

Kowloon City

3rd & 4th Floors, To Kwa Wan Market & Government Offices,
165 Ma Tau Wai Road, Kowloon
Tel : 2711 2493

Yau Tsim

3rd & 4th Floors, Kwun Chung Municipal Services Building,
17 Bowring Street, Yau Ma Tei, Kowloon
Tel : 2302 1299

Mong Kok

6th & 7th Floors, Fa Yuen Street Municipal Services Building,
123A Fa Yuen Street, Mong Kok, Kowloon
Tel : 2395 2727

Sham Shui Po

8th-10th Floors, Un Chau Street Municipal Services Building,
59-63 Un Chau Street,
Sham Shui Po, Kowloon
Tel : 2748 6959

Islands

6th & 25th Floors, Harbour Building,
38 Pier Road, Central, Hong Kong
Tel : 2852 3215

Kwai Tsing

9th Floor, Kwai Hing Government Offices Building,
166-174 Hing Fong Road, Kwai Chung, N.T.
Tel : 2420 9204

Tsuen Wan

3rd Floor, Yeung Uk Road Municipal Services Building,
45 Yeung Uk Road, Tsuen Wan, N.T.
Tel : 2212 9701

Tuen Mun

1st & 3rd Floors, Tuen Mun Government Offices Building,
1 Tuen Hi Road, Tuen Mun, N.T.
Tel : 2146 8642

Yuen Long

2nd-5th Floors, Yuen Long Government Offices,
2 Kiu Lok Square, Yuen Long, N.T.
Tel : 2475 3433

North

4th Floor, Shek Wu Hui Municipal Services Building,
13 Chi Cheong Road, Sheung Shui, N.T.
Tel : 2679 2812

Tai Po

3rd Floor, Tai Po Complex,
8 Heung Sze Wui Street, Tai Po, N.T.
Tel : 3183 9119

Sai Kung

8/F, Sai Kung Tseung Kwan O Government Complex,
38 Pui Shing Road, Tseung Kwan O, Sai Kung, N.T.
Tel : 3740 5100

Sha Tin

Level 12, Tower 1, Grand Central Plaza,
138 Sha Tin Rural Committee Road,
Sha Tin, N.T.
Tel : 2634 0136

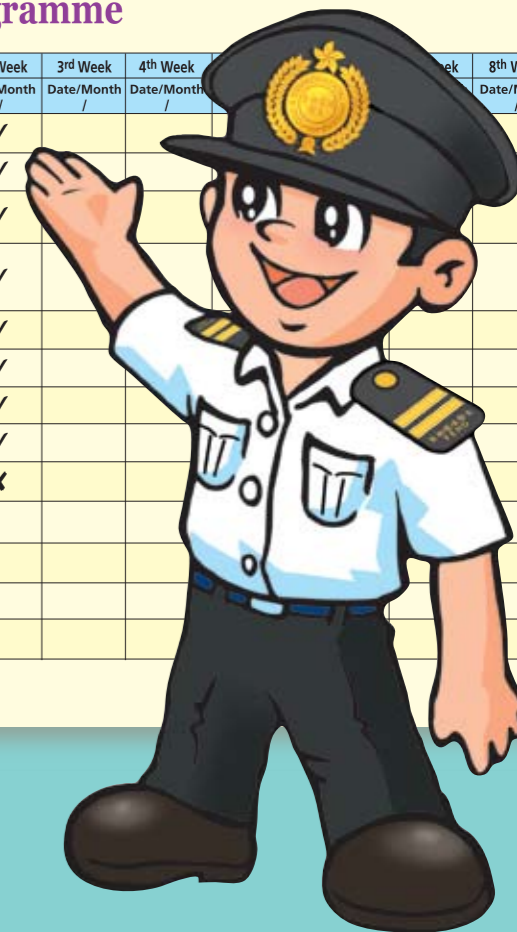
Pest Control Advisory Section

6/F, Yung Fung Shee Memorial Centre,
79 Cha Kwo Ling Road, Lam Tin, Kowloon
Tel : 3188 2064

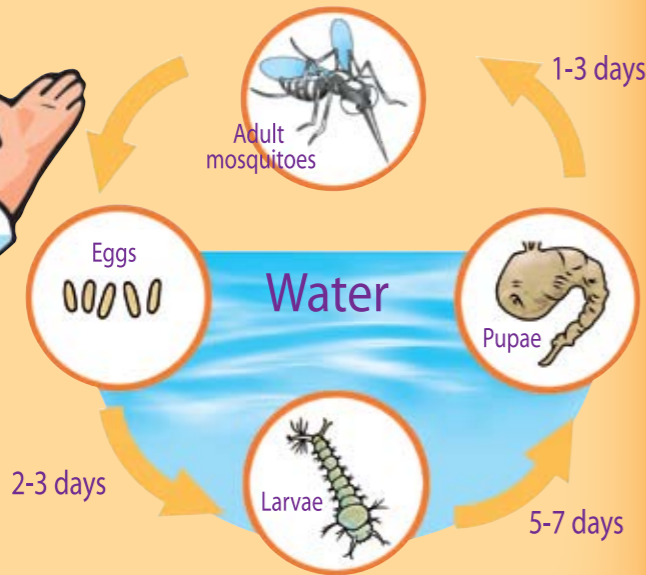
Anti-mosquito Weekly Inspection Programme

Anti-Mosquito Weekly Inspection Programme

Weekly Inspection Item	Week/Date	1st Week	2nd Week	3rd Week	4th Week	5th Week	8th Week
	Date/Month	Date/Month	Date/Month	Date/Month	Date/Month	Date/Month	Date/Month
1. Water accumulated underneath potted plants has been cleared		✓	✓				
2. Water inside vases and flower pots has been changed		✗	✓				
3. Water accumulated in trays under air-conditioning units or refrigerators has been cleared		✓	✓				
4. Glass bottles, empty containers or lunch boxes which may collect water have been disposed of into covered dustbin		✓	✓				
5. Stagnant water in containers has been cleared		✓	✓				
6. Anti-bumping tyres have been punctured to prevent water trapping		✓	✓				
7. Drains and surface channels have been cleared		✓	✓				
8. Defective ground surfaces have been topped up		✗	✓				
9. Hollow parts of bamboo stumps have been filled up with sand or soil		✓	✗				
10. Others		✓					
11. Others							
Inspected by:							
Signature:							



Mosquito bites can cause not only swelling and itching but also diseases like dengue fever, Japanese encephalitis, malaria and Chikungunya fever. Therefore, we should adopt the **Anti-mosquito Weekly Inspection Programme** to implement mosquito preventive measures, thereby eliminating mosquitoes and protecting our health.



Life cycle of mosquitoes

Anti-Mosquito Weekly Inspection Programme

As mosquito eggs develop into adults in seven days, we should inspect our household /workplace and surrounding areas every week. During the inspection, the following Anti-mosquito Weekly Inspection Programme can be used for record purpose (each premises may devise its own Anti-mosquito Weekly Inspection Programme according to our advice as appropriate). Carrying out the inspection on a fixed day (e.g. Saturday) of each week can facilitate the inspection to be made habitually and not to be missed.

Weekly Inspection Item	Week/Date	1st Week	2nd Week	3rd Week	4th Week	5th Week	6th Week	7th Week	8th Week	9th Week	10th Week
	Date/Month /	Date/Month /	Date/Month /	Date/Month /	Date/Month /	Date/Month /	Date/Month /	Date/Month /	Date/Month /	Date/Month /	Date/Month /
1. Water accumulated underneath potted plants has been cleared											
2. Water inside vases and flower pots has been changed											
3. Water accumulated in trays under air-conditioning units or refrigerators has been cleared											
4. Glass bottles, empty containers or lunch boxes which may collect water have been disposed of into covered dustbin											
5. Stagnant water in containers has been cleared											
6. Anti-bumping tyres have been punctured to prevent water trapping											
7. Drains and surface channels have been cleared											
8. Defective ground surfaces have been topped up											
9. Hollow parts of bamboo stumps have been filled up with sand or soil											
10. Others											
11. Others											
Inspected by:											
Signature:											

Note:

- Adding a "✓" in the box indicates that the condition is satisfactory.
- Adding a "X" in the box indicates that irregularity is detected and rectifying action should be taken immediately. After rectifying work has been taken, please confirm by countersigning on the corresponding box.