

Section five

Scope of
work for

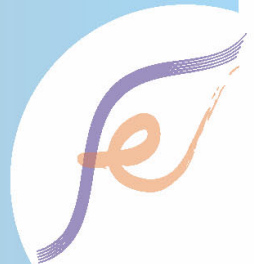
Mosquito

control and prevention in

Households • Housing estates • Schools • Construction sites



FEHD



Mosquito control and prevention

An integrated pest management approach has to be adopted for the control and prevention of mosquitoes. Elimination of stagnant or/and slow running water is the fundamental and most effective mosquito prevention and control method. Application of chemicals including pesticides should be the last resort and is a temporary measure for killing mosquito larvae. Space spraying against adult mosquitoes using pesticides should only be carried out when there is an urgent need to reduce the number of adult mosquitoes such as for preventing transmission of mosquito-borne diseases. Ecological impacts have to be taken into consideration when selecting the method(s) of mosquito control.

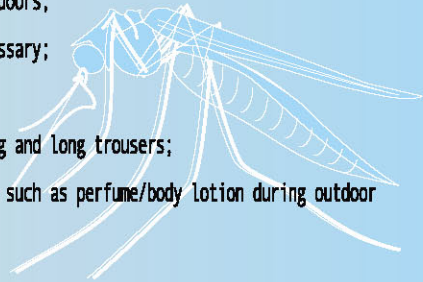
Advice to the public

- * To tidy up their premises and check for any accumulation of water inside their premises;
- * To remove all unnecessary accumulated water and eliminate the sources;
- * To stop storing water for irrigation in places that are in proximity to morning walk trails or Government land;
- * To dispose of household receptacles containing water such as flower vase, saucers and empty containers, the public can make reference to Section Four - Suggested solutions to mosquito breeding indoors as well as outdoors.

Mosquito control and prevention

Personal protection

- * To install mosquito screens on windows and doors;
- * To use mosquito net during sleeping if necessary;
- * To apply insect repellent on clothes;
- * To wear light-coloured long-sleeved clothing and long trousers;
- * To avoid applying odour-producing cosmetics such as perfume/body lotion during outdoor activities;



To contact the district pest control offices, Pest Control Advisory Section of the Food & Environmental Hygiene Department, or pest control companies for assistance in mosquito control or prevention.

Mosquito control and prevention

Advice to household – preventive measures

* To contain the mosquito problem and to prevent the breeding of mosquitoes in the home and the surrounding areas like rooftops, balconies, light wells, parking areas and gardens, occupiers can make reference to Section Four-Suggested solutions to mosquito breeding indoors as well as outdoors.

As mosquito eggs develop into adults in about seven days, we should inspect our households every week. An anti-mosquito weekly inspection programme for domestic premises which is attached at appendix I as reference, can be adopted to implement mosquito preventive measures. The programme is used for recording purposes and could facilitate the inspection being made habitually and consistently.

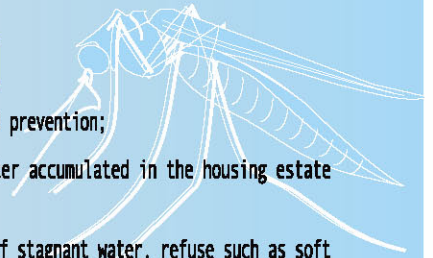
Please contact the relevant district pest control office, the Pest Control Advisory Section of Food & Environmental Hygiene Department, or pest control companies for assistance in mosquito control or prevention.



Mosquito control and prevention

Advice to housing estates – preventive measures

- * Appoint staff to be responsible for mosquito control and prevention;
- * Inspect at least once a week to ensure there is no water accumulated in the housing estate and remove any stagnant water once found;
- * As *Aedes albopictus* likes to lay eggs in small pools of stagnant water, refuse such as soft drink cans and empty lunch boxes should be properly disposed of in covered litter containers to prevent accumulation of stagnant water;
- * To prevent mosquito breeding, the management agencies of housing estates can make reference to Section Four-Suggested solutions to mosquito breeding indoors as well as outdoors.



As mosquito eggs develop into adults in about seven days, housing estates and the surrounding areas should be inspected every week. A sample form for anti-mosquito weekly inspection programme for housing estates which is attached at appendix II as reference can be adopted to implement mosquito preventive measures. The form is used for record purpose and could facilitate the inspection being made habitually and consistently.

A trained pest control personnel or a pest control company can be appointed to handle mosquito control and prevention if you are unable to perform the work.



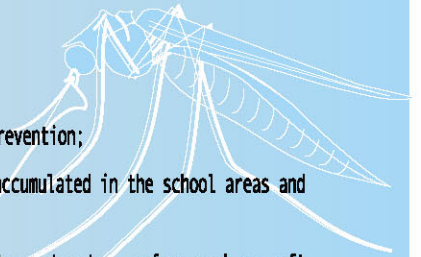
Mosquito control and prevention

Advice to schools – preventive measures

- * Appoint staff to be responsible for mosquito control and prevention;
- * Inspect at least once a week to ensure there is no water accumulated in the school areas and remove any stagnant water once found;
- * As *Aedes albopictus* likes to lay eggs in small pools of stagnant water, refuse such as soft drink cans and empty lunch boxes should be properly disposed of in covered litter containers to prevent accumulation of stagnant water;
- * The Management of school can make reference to Section Four-Suggested solutions to mosquito breeding indoors as well as outdoors.

As mosquito eggs develop into adults in about seven days, school areas should be inspected every week. A sample form for anti-mosquito weekly inspection programme for school areas which is attached at appendix III as reference can be adopted to implement mosquito preventive measures. The form is used for record purpose and could facilitate the inspection being made habitually and consistently.

A trained pest control personnel or a pest control company can be appointed to handle mosquito control and prevention if you are unable to perform the work especially during school vacations.



Mosquito control and prevention

Advice to construction sites – preventive measures

- * Assign a staff member for the control and prevention of mosquito breeding on site;
- * Tidy up the construction site regularly, at least weekly and check for any accumulation of water;
- * Remove all unnecessary water collection and eliminate the source(s);
- * Carry out larviciding against mosquito breeding where breeding sources or potential breeding grounds are inaccessible or could not be eliminated;
- * The management of construction site can make reference to Section Four-Suggested solutions to mosquito breeding in construction sites.

As mosquito eggs develop into adults in about seven days, school areas should be inspected every week. A sample form for anti-mosquito weekly inspection programme for construction sites which is attached at appendix IV as reference can be adopted to implement mosquito preventive measures. The form is used for record purpose and could facilitate the inspection being made habitually and consistently.

A trained pest control personnel or a pest control company can be appointed to handle mosquito control and prevention if you are unable to perform the work.



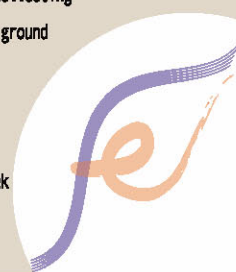
Appendix I

Mosquito Inspection Program Weekly for Domestic Premises

Problems	Week/Date	1 st Week	2 nd Week	3 rd Week	4 th Week	5 th Week	n th Week
		/	/	/	/	/	/	/
1. Stagnant water in flower pot saucers								
2. Mosquito larvae in flower vases								
3. Stagnant water in trays underneath refrigerators and air-conditioners								
4. Presence of garbage that might collect water								
5. Stagnant water in containers								
6. Stagnant water in disused tyres								
7. Stagnant water in choked water drains								
8. Stagnant water on uneven floor								
9. Stagnant water in tree holes and bamboo stumps								
10. Others								
Name of Inspector								
Signature								

Remarks:

- Families may design their own inspection program to meet specific needs
- Family members should carry out weekly inspections. If mosquitoes or potential breeding places for mosquitoes are found, immediate and appropriate follow up actions should be taken, including:
 - * Remove stagnant water
 - * Dispose of garbage properly
 - * Cover water containers properly, and keep empty containers upside down to avoid water collecting
 - * Apply larvicidal oil or pesticide to tree holes, whereas fill bamboo stumps and uneven ground with sand or soil as appropriate
 - * Remove objects from water drains to avoid choking
 - * Wrap up disused tyres properly or punch the tyres with large holes
 - * Remove water in flower pot saucers and change water in flower vases at least once a week



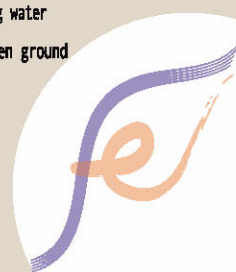
Appendix II

Mosquito Inspection Program Weekly for Housing Estates

Problems \ Week/Date	1 st Week	2 nd Week	3 rd Week	4 th Week	5 th Week	n th Week
	/	/	/	/	/	/	/
1. Presence of garbage that might collect water							
2. Stagnant water in flower pot saucers							
3. Mosquito larvae in flower vases							
4. Stagnant water in disused tyres							
5. Stagnant water in containers							
6. Stagnant water in choked gullies, sand traps etc.							
7. Stagnant water in holes for poles							
8. Stagnant water in trays underneath refrigerators and air-conditioners							
9. Stagnant water in tree holes and bamboo stumps							
10. Stagnant water on uneven floor							
11. Others							
Name of Inspector							
Signature							

Remarks:

- Estate managers may design their own inspection program to meet specific needs
- Inspection personnel should be assigned to carry out weekly inspections. If mosquitoes or potential breeding places for mosquitoes are found, immediate and appropriate follow up actions should be taken, including:
 - * Remove stagnant water
 - * Dispose of garbage properly
 - * Cover water containers properly, and keep empty containers upside down to avoid collecting water
 - * Apply larvicidal oil or pesticide to tree holes, whereas fill bamboo stumps and uneven ground with sand or soil as appropriate
 - * Remove garbage and fallen leaves from gullies to avoid choking
 - * Wrap up disused tyres properly or punch the tyres with large holes
 - * Remove water in flower pot saucers and change water in flower vases at least once a week



Appendix III

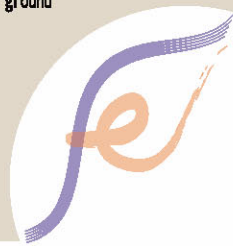
Mosquito Inspection Program for Schools

Weekly

Problems	Week/Date	1 st Week	2 nd Week	3 rd Week	4 th Week	5 th Week	n th Week
		/	/	/	/	/	/	/
1. Presence of garbage that might collect water								
2. Stagnant water in choked gullies, sand traps etc.								
3. Stagnant water in flower pot saucers								
4. Mosquito larvae in flower vases								
5. Stagnant water in containers								
6. Stagnant water in disused tyres								
7. Stagnant water in trays underneath refrigerators and air-conditioners								
8. Stagnant water in tree holes and bamboo stumps								
9. Stagnant water on uneven floor								
10. Others								
Name of Inspector								
Signature								

Remarks:

- Management of schools may design their own inspection program to meet specific needs
- Inspection personnel should be assigned to carry out weekly inspections. If mosquito or potential breeding places for mosquitoes are found, immediate and appropriate follow up actions should be taken, including:
 - * Remove stagnant water
 - * Dispose of garbage properly
 - * Cover water containers properly, and keep empty containers upside down to avoid collecting water
 - * Apply larvicidal oil or pesticide to tree holes, whereas fill bamboo stumps and uneven ground with sand or soil as appropriate
 - * Remove garbage and fallen leaves from gullies to avoid choking
 - * Wrap up disused tyres properly or punch the tyres with large holes
 - * Remove water in flower pot saucers and change water in flower vases at least once a week



Appendix IV

Mosquito Inspection Program Weekly for Construction Sites

Problems \ Week/Date	1 st Week	2 nd Week	3 rd Week	4 th Week	5 th Week	n th Week
	/	/	/	/	/	/	/
1. Presence of garbage that might collect water							
2. Stagnant water in containers							
3. Stagnant water on uneven floor							
4. Stagnant water in choked gullies, sand traps etc.							
5. Construction materials / equipment collecting stagnant water							
6. Stagnant water in disused tyres							
7. Stagnant water in trays underneath refrigerators and air-conditioners							
8. Stagnant water in bamboo stumps							
9. Others							
Name of Inspector							
Signature							

Remarks:

- The management of construction sites may design their own inspection program to meet specific needs
- Inspection personnel should be assigned to carry out weekly inspection. If mosquito or potential breeding places for mosquitoes were found, immediate and appropriate follow up actions should be taken, including:
 - * Remove stagnant water
 - * Dispose of garbage properly
 - * Cover water containers properly, and keep empty containers upside down to avoid collecting water
 - * Fill bamboo stumps and uneven ground filled with sand or soil as appropriate
 - * Remove garbage from gullies to avoid choking
 - * Wrap up disused tyres or punch the tyres with large holes
 - * Properly cover construction materials that might collect water

